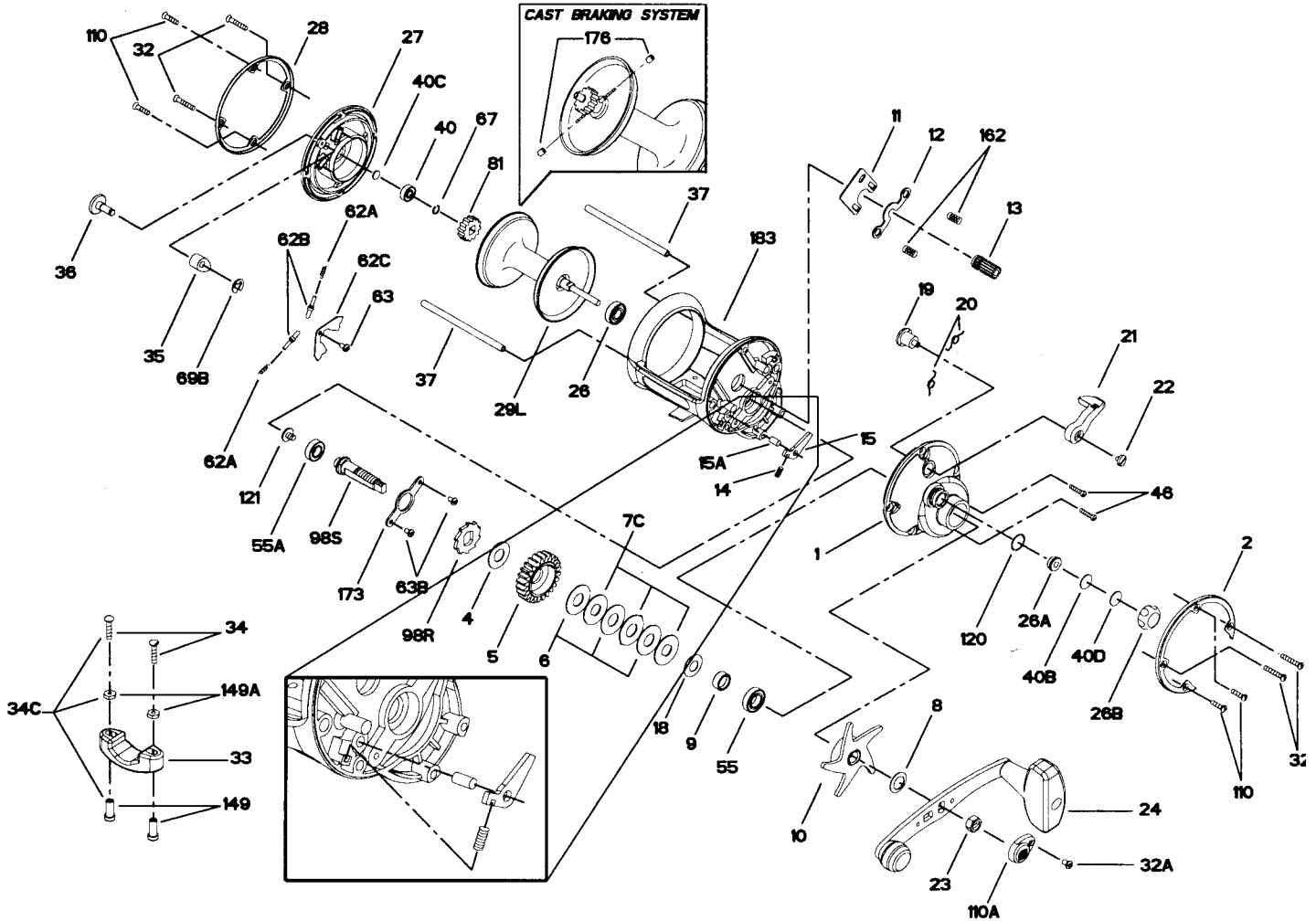




PARTS AND PRICE LIST FOR MODEL 535GS



KEY NO.	PART NO.	DESCRIPTION	PRICE	KEY NO.	PART NO.	DESCRIPTION	PRICE
1	1-535	Right Side Plate	\$6.50	34C	34C-45	Rod Clamp Screw w/Nuts	\$2.25
2	2-535	Right Side Ring	5.00	35	35-310N	Click Tongue	1.00
4	4-60	Fiber Washer	.40	36	36-555	Click Button	1.10
5	5-545	Main Gear	6.50	37	37-535	Frame Post (2 req.)	1.50
6	6-49	Friction Drag Washer (3 req.)	.60	40	40-320	L.S. Spool Ball Bearing	10.60
7C	7C-49	Metal Drag Washer (Set)	2.70	40B	40C-555	Metal Thrust Washer	.40
8	8-60	Tension Spring Washer	.50	40C	40C-310	Metal Thrust Washer	.40
9	9-555	Spacing Sleeve	.90	40D	40D-555	Rubber Thrust Washer	.40
10	10-555	Drag Star	6.50	46	46-4300	Side Plate Screw (2 req.)	.50
11	11-535	Eccentric Jack	1.30	55	55-12H	Ball Bearing	13.25
12	12-555	Pinion Yoke	1.15	55A	20-722	Ball Bearing	12.95
13	13-545	Pinion Gear	4.50	62A	62-545	Click Spring (2 req.)	.45
14	14-535	Dog Spring	.40	62B	62B-310	Click Pin (2 req.)	.65
15	15-535	Dog	1.15	62C	62C-310	Click Spring Cover	2.25
15A	158-535	Dog Pin	.40	63	63-500S	Click Spring Screw	.80
18	18-505	Tension Spring Washer	.95	63B	63-330	Bearing Retainer Screw (2 req.)	.55
19	19-535	Eccentric	1.65	67	67-9	Lock Ring	.40
20	20-155	Eccentric Spring (2 req.)	.40	69B	69B-600	Retaining Ring	.90
21	21-310	Eccentric Lever	3.25	81	81-555	Click Ratchet	.75
22	22-310	Eccentric Screw	.50	98R	98-555	Main Gear Ratchet	1.40
23	23-555	Handle Nut	1.00	98S	134-555	Gear Stud	3.50
24	24-555	Handle	9.00	110	110-50	Side Plate Short Screw (4 req.)	.50
26	26-25	R.S. Screw Ball Bearing	13.25	110A	110A-555	Handle Nut Lock Cap	.75
26A	26-555	Right Side Bushing	1.00	120	120-113H	O-Ring	.50
26B	26B-555	Spool Tension Control Cap	1.75	121	121-555	Bearing Screw	1.75
27	27-535	Left Side Plate	4.50	149	149-45	Rod Clamp Nut (2 req.)	.90
28	28-535	Left Side Ring	6.00	149A	149-200	Rod Clamp Hex Nut (2 req.)	.45
29L	29L-535	Aluminum Spool Assembly	15.00	162	162-130	Clutch Spring (2 req.)	.45
32	32-310	Frame Post Screw (4 req.)	.40	173	173-555	Bearing Retainer	2.00
32A	32-15	Handle Lock Screw	.40	176	176-555	Casting Brakes (2 req.)	.50
33	33-113	Rod Clamp	4.00	183	183-535	Frame	17.50
34	34-45	Rod Clamp Screw (2 req.)	.90				